

PART OF NE 1/4, SEC. 32 & NW 1/4, SEC 33, T.7N., R.2W., S.L.B. & M.

# PLAIN CITY BLOCK 7, PLAT A

TAXING UNIT: 296

SCALE 1" = 50'

SEE PAGE 36

12

2425

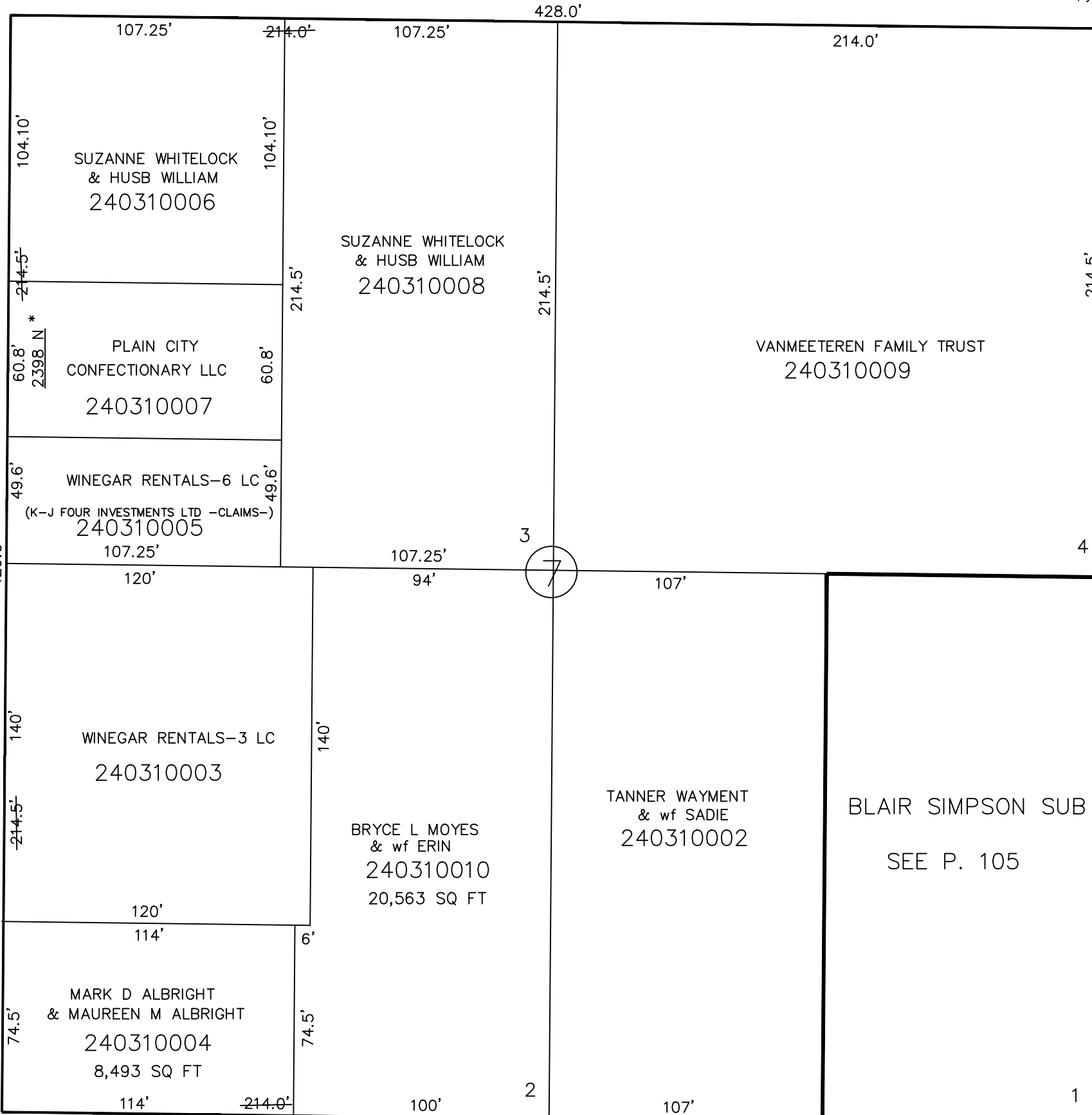
NORTH

STREET

S 89°17' E

WEST STREET

WEST STREET



\* NOTE: ADDRESS CORR AFFDT E#2725304 MARCH 10, 2015.

SEE PAGE 32

8

WEST STREET

WEST STREET

4350

4275

2350

NORTH

STREET

S 89°17' E

6

SEE PAGE 30

SEE PLAT B  
PAGE 51

SEE ORIGINAL DEDICATION  
PLAT OF PLAIN CITY IN  
BOOK 5, PAGE 80 OF RECORDS.